



DELIVERING THE MOST ECONOMICAL AND ENVIRONMENTALLY CONSCIOUS SOLUTIONS FOR THE SUPPORT AND PROTECTION OF UNDERGROUND UTILITIES.

Problem

Previously, supporting and protecting underground utilities and infrastructure involved numerous crews working in deep trenches and excavations for extended periods of time; exposing workers to tremendous risks from trench collapses, hazardous materials that often encase the utility infrastructure, and equipment failures and accidents.

This jeopardizes the utility companies' infrastructure, slows the contractors' progress and threatens profit, and the general public faces delays which ultimately impacts local businesses and increases traffic congestion.

Solution

Terra Shield™ systems and equipment provide the industry's newest advances in technology and the most cost-effective means of supporting underground utilities in-place in ways never deemed possible.

Once the shields are in place, trusses are then installed along the length of intended excavation with patented threaded j-rods to compress a load under the utility preventing movement during the excavation process.

The Terra Shield™ not only supports the utility in-place, but its steel barrier acts as a protective shield against accidental contact with the utility while work is performed below. After the job is completed, the Terra Shield™ remains in place as future protection for the utility's infrastructure.

Results

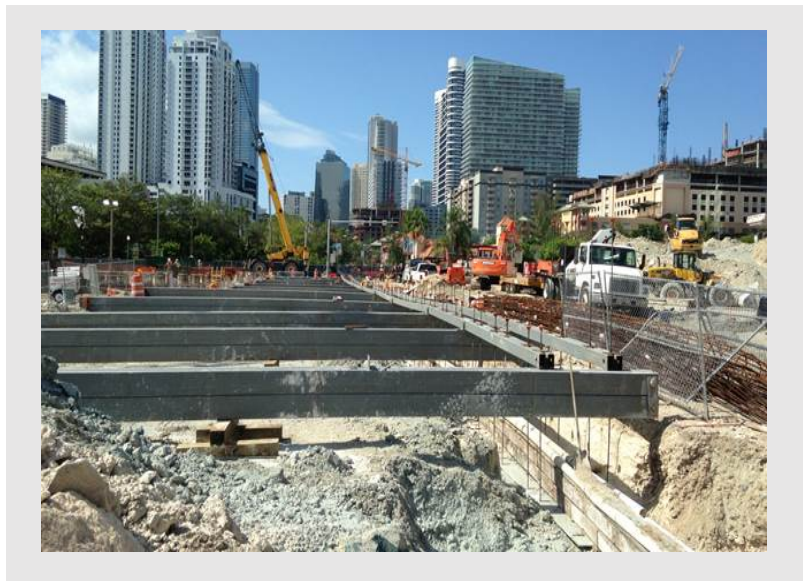
Support projects that utilize the Terra Shield™ processes and products can be accomplished in off-peak periods typically in 4 to 8 hours with less equipment and fewer resources. Saving both time and money.

Providing protection and access under existing underground utilities eliminating exposure or deterioration to the utility infrastructure.

Consequently, the safety of the worker is greatly enhanced by virtually eliminating the need to have workers in a trench. Because the utility infrastructure is not contacted in the Terra Shield™ process, the risks associated with hazardous materials and damage to the utility is eliminated



Terra Shield™ is customizable to suit your site conditions and utility needs. Whether it is using our patented steel Terra Shields™ or our non-conductive pipe hangers, our staff of professionals can tailor a plan to your exacting standards.



This innovative and sustainable process has no less than seven patents pending and represents the new industry standard for support and protect projects.

Congruex is a national leader in designing and building better networks. For more information contact us at (720) 749-2318 or congruex.com